

Connect Mac to SMARTboard-EETT

***For a MacBook laptop you need a white adapter (mini-DVI to VGA adapter, \$20 from Apple) to go from the laptop to the projector! You received one adapter with the EETT cart. Different adapters are needed for other Macintosh models.

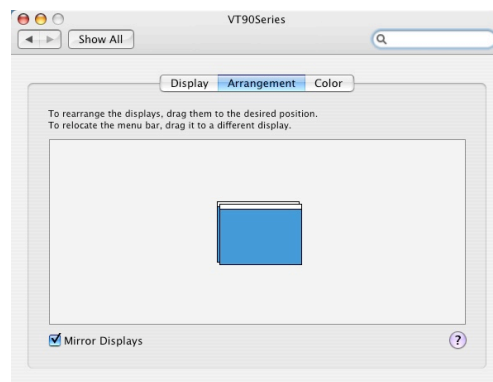
This handout assumes that you have SMARTboard software installed. If not, the software can be downloaded from :

<http://www2.smarttech.com/st/en-US/Support/Downloads/default.htm>

Connecting Projector

1. Connect the projector to the computer. Turn on the projector first and then turn on the computer.

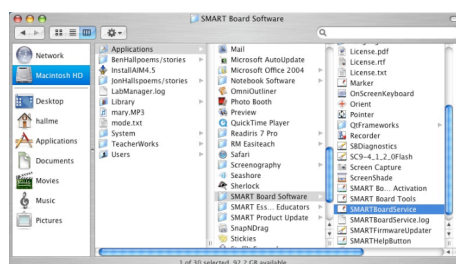
To get the MacBook screen to show on the SMARTBoard, go to the Apple menu and select System Preferences. Click on Displays. Set the resolution to 1024X624. Select Arrangement. Make sure Mirror Displays is selected



2. Move the ring around the lens of the projector until the screen image is as large as possible. Adjust the distance between the projector and the SMARTBoard until the image just fills the screen (move both the cart and the SMARTBoard around, if necessary). Adjust the projector focus. When you have the image in place, lock down the 4 wheels of the SMARTBoard by pressing the toggle switch toward the floor.

Using Smart Software

3. Before you use the SMARTBoard, go to the hard drive and open Applications. Click on the SMARTBoard software folder and doubleclick the SMARTBoardService.



4. Look under the Apple and open System Preferences. Click on Ink.



Make sure Handwriting recognition is On and Allow me to Ink in any application is not selected.

5. Open SMART Notebook and SMART Tools by double-clicking the icons on the screen. Minimize them to the task bar.

6. The SMARTBoard must be 'oriented' or calibrated to match the computer it's being used with. The easiest way to orient is to push both (black) buttons on the SMARTBoard tray (the keyboard and mouse buttons) at the same time. You can also Orient from the menu.

7. You will see the SMARTBoard screen change: a red X will be blinking at the upper left. To orient the board, press each red X in the order they appear. If the board or the projector are knocked out of orientation, repeat this process.

8. Did you lose your toolbar? Press Control (ctrl) and click. Select Icon and text.

9. Your SMARTBoard is ready to use.