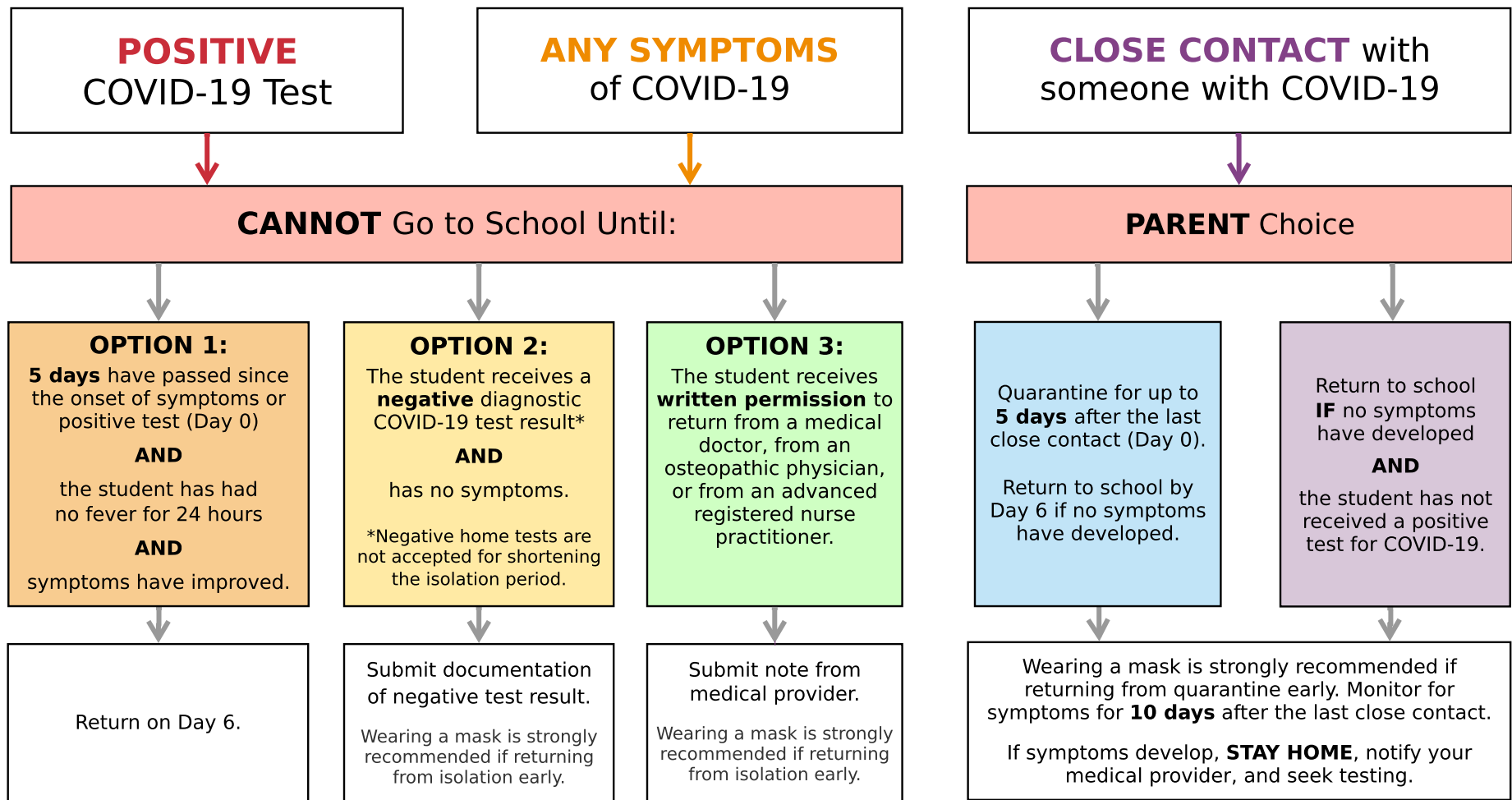


Alachua County Public Schools COVID-19 Decision Flow Chart



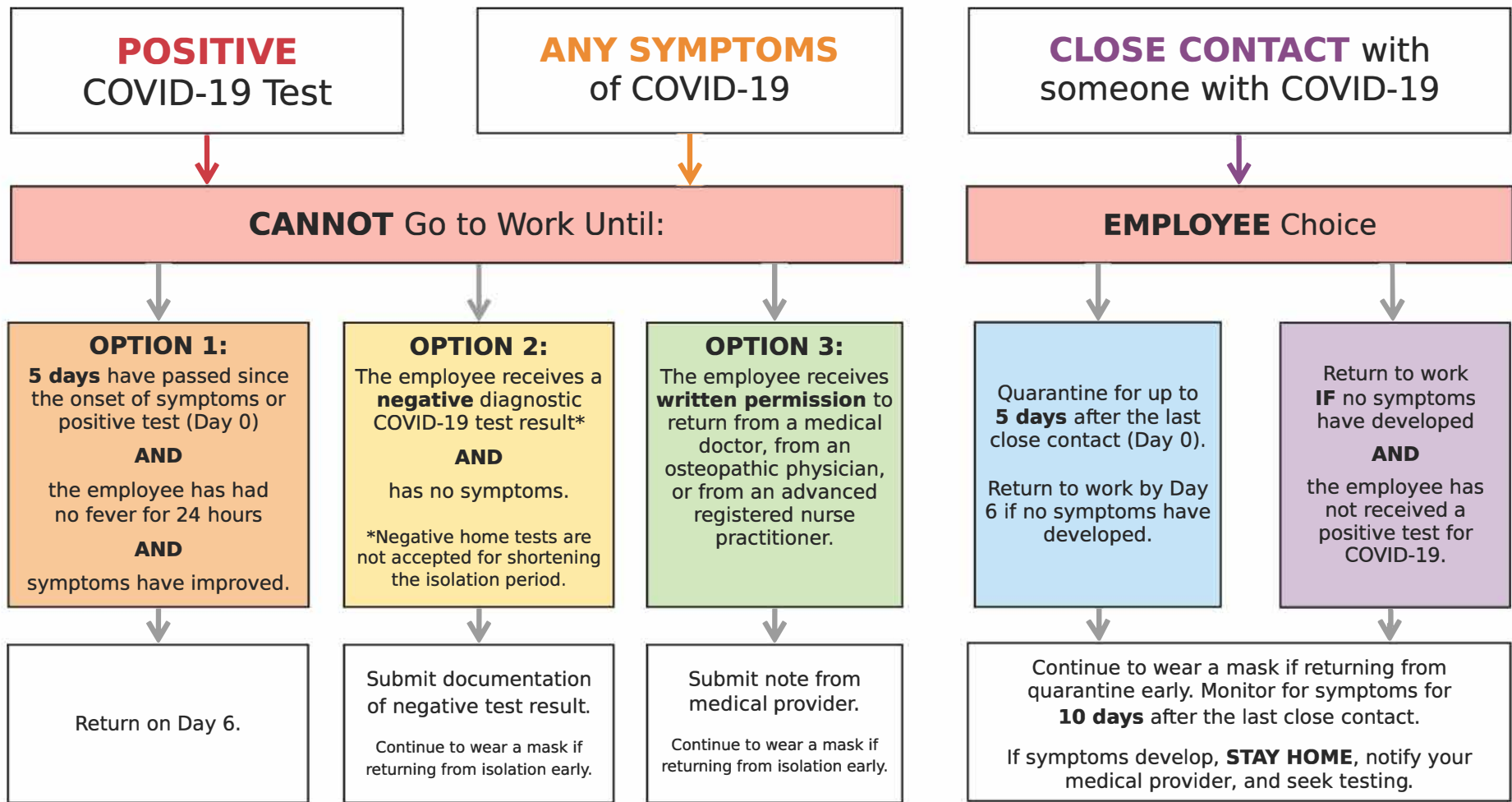
Symptoms of COVID-19 include: Sore throat, fever (100.4°F or higher), cough, loss of taste or smell, chills, shortness of breath or difficulty breathing, fatigue, headache, muscle pain or body aches, sore throat, congestion or runny nose, and nausea, vomiting, or diarrhea, not explained by another known condition.

Close contact is defined as being within 6 feet of someone with COVID-19 for a total of 15 minutes or more.

The Protocols for Controlling COVID-19 in School Settings were created by the Florida Department of Health (DOH Rule 64D-3.049)

Last Updated February 25, 2022. Learn more at www.sbac.edu/covid19

Alachua County Public Schools COVID-19 Decision Flow Chart - Employees



Symptoms of COVID-19 include: Sore throat, fever (100.4°F or higher), cough, loss of taste or smell, chills, shortness of breath or difficulty breathing, fatigue, headache, muscle pain or body aches, sore throat, congestion or runny nose, and nausea, vomiting, or diarrhea, not explained by another known condition.

Close contact is defined as being within 6 feet of someone with COVID-19 for a total of 15 minutes or more.

Paid Administrative Leave is available for fully vaccinated employees who test positive for COVID-19. Paid Administrative Leave is also available for fully vaccinated employees with symptoms who get tested and are awaiting results.

The Protocols for Controlling COVID-19 in School Settings were created by the Florida Department of Health (DOH Rule 64D-3.049)

Last Updated February 25, 2022. Learn more at www.sbac.edu/covid19