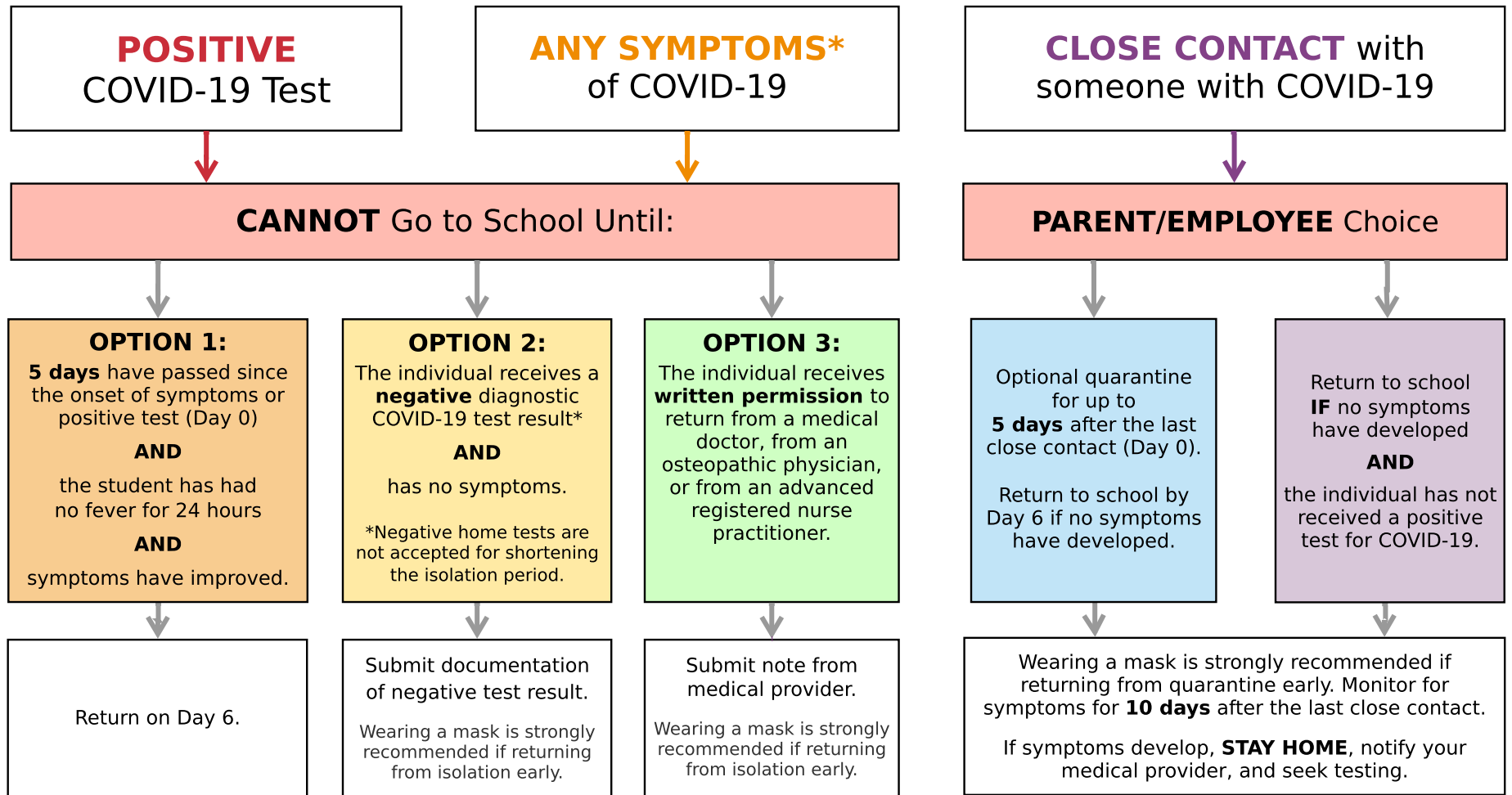


Alachua County Public Schools COVID-19 Decision Flow Chart



People with COVID-19 have had a wide range of symptoms reported - ranging from mild symptoms to severe illness. Possible symptoms include: Sore throat, fever (100.4°F or higher), cough, loss of taste or smell, chills, shortness of breath or difficulty breathing, fatigue, headache, muscle pain or body aches, congestion or runny nose, and nausea, vomiting, or diarrhea, **not explained by another known condition.**

Close contact is defined as being within 6 feet of someone with COVID-19 for a total of 15 minutes or more.

The Protocols for Controlling COVID-19 in School Settings were created by the Florida Department of Health (DOH Rule 64D-3.049), guided by the most current Center for Disease Control (CDC) guidelines.

Last Updated August 1, 2023. Learn more at www.sbac.edu/covid19