

TIGER TIMES

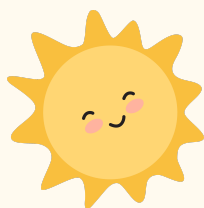


September
2022

ALACHUA

eSchool
NEWSLETTER

WELCOME TO ESCHOOL!



Hi Tigers! We are so excited that you will be spending the 2022-2023 school year with us! Please check out this edition of *Tiger Times* for information about our school and to learn some tips and tricks that will help you navigate your courses. Don't forget to fill out our **Field Trip Interest Form**, which is explained on page 4!

TEXTBOOKS



We want to make sure all of our eSchool Tigers are prepared! Do you have all of your textbooks? If you are missing anything, please ask your teacher for help.

Click **HERE** to see the list of textbooks each grade-level will need for the 2022-2023 school year!

DID YOU
KNOW?



Out of all 12 months of the year, September is spelled with the most letters. It contains nine letters, and it happens to be the ninth month of the year.



The first day of fall is September 22. This is when the hours in the day are almost equal to the hours in the night.



Aside from Labor Day, September has a couple of other important holidays! Don't forget to celebrate:
National Grandparents Day (Sept. 11)
National Cheese Pizza Day (Sept. 5)



COMMUNICATION IS KEY



One of the most important components of a successful year is frequent communication between the teacher and the Learning Coach.



Please check your email frequently! eSchool teachers send emails with updates, important information, and feedback often.



Do you have questions? **Email is the BEST way for you to contact your teacher!** Please do not send messages through Canvas. Thank you!



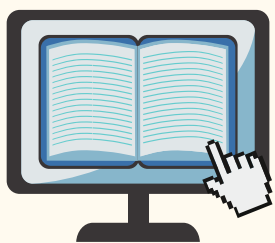
Please make sure that your Canvas alerts are turned ON for assignment comments.

We know our students are working very hard, and we want to celebrate their successes and provide helpful feedback! Please read the assignment comments with your child so he/she knows what to work on for his/her next assignment. Thank you for your help with this!

ONLINE ACCESS

Your child should have access to all of his/her **online textbooks** through myPortal and Canvas.

- **Please click [HERE](#) for information about how to access your child's online resources.**
- **Click [HERE](#) for a quick video that shows how to access Benchmark Advance materials.**



To access **BrainPOP videos, games, and activities**, first log into myPortal, and then click on the BrainPOP icon. Then, you can either browse the videos in BrainPOP, or you can click any of the BrainPOP links in your Canvas modules.

For more information, click [HERE](#)!

Contact your child's teacher if you have any questions!

TEXTBOOK READ-ALoud OPTIONS

Did you know that many of our online textbooks have a **read-aloud** option? Follow the steps below to access this helpful feature!

READING

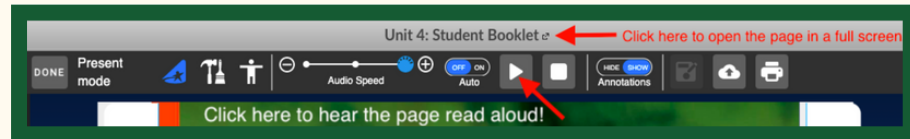


Log into **Benchmark** through **Canvas**.

*When you are in your **reading course** in **Canvas** click the "**Benchmark Universe**" link on the far left.

Click the **Student Booklet** in the Unit Overview module.

- Use the **play (triangle) button** at the top. **OR**
- Click the **title of the page** to open in a bigger window, then use the **play button**.



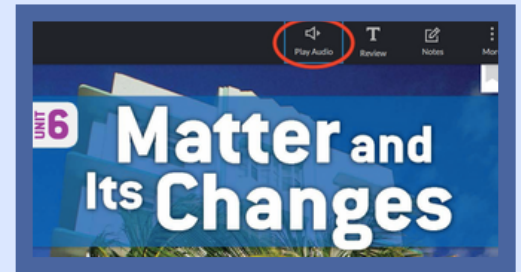
SCIENCE



HM ED

Open the student textbook through **myPortal**.

When you find the lesson you would like to read, click the "**Play Audio**" button at the top of the page.



SOCIAL STUDIES

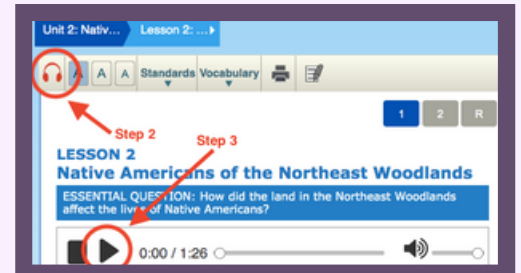


ConnectED

Open the student textbook through **myPortal**.

Select "**My Lesson**" in the top right corner. This will open a new window.

Select your desired unit and lesson, and click the **headphones** icon. Then, click the **play button** below the title.





IXL

IXL is a comprehensive learning program offering unlimited math and language arts practice across thousands of skills—all of which are aligned to Florida Standards. This is a wonderful resource for students to practice skills that they are learning in school.



To access IXL through Canvas, click the **IXL Learning link** on the lefthand side when you are logged into Canvas!

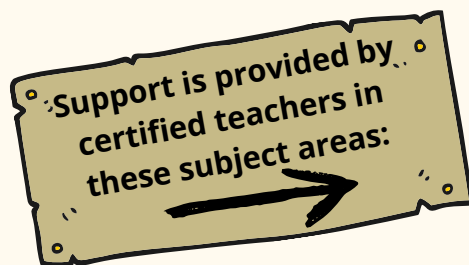
Click **HERE** for a handout about using IXL at home.

Click **HERE** for a fun scavenger hunt to help you learn more about IXL!

BEYOND THE BELL - FREE VIRTUAL TUTORING

Free virtual support is now available through
Alachua County Public Schools!

Elementary sessions are on **Mondays through Thursdays**
from **3 to 4 p.m.** and from **6 to 7 p.m.**



<http://www.sbac.edu/tutor>



Mark your calendar!

It's field trip time!



eSchool Park Meetup

Join us for our first eSchool Park Meetup of the 2022-2023 school year!

Meet your classmates and enjoy a morning of fun at Depot Park!



***DRESS FOR FUN IN THE SUN, AND BRING SWIMSUITS FOR THE SPLASH PAD!**



Friday
September 16th

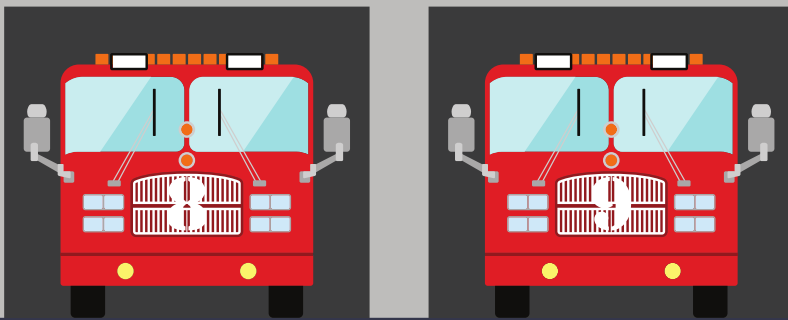


10:00-12:00



Depot Park
874 SE 4TH ST

FIRE STATION



we are
fired up

TO EXPLORE THE FIRE STATION!



Tuesday
October 4th



10:00

Station 1 - 427 S Main Street

FIELD TRIP INTEREST FORM *** PLEASE HELP! ***

We are working hard to plan **field trips** our Tigers will love, and we need your help!

Please fill out **this brief form** to let us know how interested you are in participating in in-person and/or virtual field trips.

Please submit your response by September 15th.

Thank you for your help with this!





How can I see which assignments I have completed, and which assignments I still need to work on?

HELPFUL HINT: Arrange your grades by **MODULE**.

1. Open your **grades** for a subject.
2. Click on the drop down menu under "**Arrange**" at the top. It's probably set to the default which is "Due Date."
3. Choose "**Module**" from the drop down menu.
4. Click the "**Apply**" button.

Look at the **MODULES** page. You will see a small icon next to each assignment.

- ✓ If you see a **green check**, the assignment is complete!
- If there's an **open circle**, the assignment has not yet been completed. Look at the smaller words under the page title to see what the requirement is. (It might say "view" or "submit" or "score at least...")
- ⊖ If there's a **red negative sign**, the minimum score has not been met.

USING THE
CANVAS APP
ON YOUR PHONE OR TABLET



When setting up the Canvas app, what do I type when it asks for my school?

For your school, you will type: **SBAC**



How can I scan and upload assignments?

With just a few clicks, you can scan and upload assignments right in the Canvas app!

Click **HERE** to see how!



hello from our principal



Dear Alachua eSchool Tigers,

I am thrilled to join the Tiger community! It has been a pleasure to meet staff, families, and students. Everyone has been so welcoming.



This is my fifth year in Alachua County Public Schools. I served as the assistant principal and the principal at Terwilliger Elementary School and as the assistant principal and interim principal at Duval Early Learning Academy. Prior to that, I was a teacher in Washington state and led schools as the assistant principal and principal in Seattle, Washington and California's central coast. I absolutely love everything about being an educator, especially watching students grow and thrive both academically and socially emotionally each year.

My family and I relocated from California to Florida to be closer to our family in New York, Florida, and the Dominican Republic. My husband, son, two dogs, and I really enjoy living in Florida and taking advantage of great beaches, hiking, and camping. A few of my favorite things are family time, reading, and gelato.

It is important to me that we provide the best possible educational experience to you and your child. Our faculty and staff really care about every student and have worked hard to prepare and plan for a great school year. Please make sure to keep strong communication with your child's teacher throughout the year, that connection matters.

We are here for you. Reach out to our team at any time and let us know how we can help. Go Tigers!

Jesely Alvarez, Principal
Alachua eSchool

A FEW FAVORITES:

♥ FAMILY TIME 📖 READING 🍦 GELATO

MEET THE OFFICE STAFF

PROGRAM SERVICE
SPECIALIST AND
ACADEMIC ADVISOR

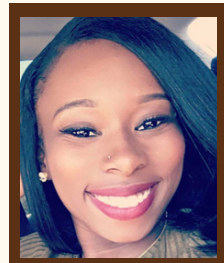


SARAH BURNS

A Few Favorites:

- 🧳 Traveling
- 🌸 The Color Red
- 🌮 Tacos

EXECUTIVE
ASSISTANT



KENYA TOLBERT

A Few Favorites:

- 👩 Being a Mom
- 🛍️ Shopping
- 👨 Visiting Family

REGISTRAR



ASIA WILLIAMS

A Few Favorites:

- 🍦 Ice Cream
- 👶 My Mini Me's
- 🚢 Cruising

SCHOOL
COUNSELOR



MEREDITH PERRY

A Few Favorites:

- ☕ Coffee
- 🌸 The Color Blue
- 🍊 Citrus



MEET THE TEACHERS

KATE LAFLER
laflerak@gm.sbac.edu

K & 1



A Few Favorites:

- Rainy days
- Cookies
- Tubing the Ichetucknee

REBECCA HERRERA
herrerarc@gm.sbac.edu

2 & 3



A Few Favorites:

- Photography
- Apples
- Musicals

ASHLEY PURDY
purdyam@gm.sbac.edu

4 & 5



A Few Favorites:

- Cherry Coke
- Thanksgiving
- The Chronicles of Narnia*

KATE WALTON
waltonkl@gm.sbac.edu

ESE



A Few Favorites:

- The Florida Gators
- Cats
- Harry Potter





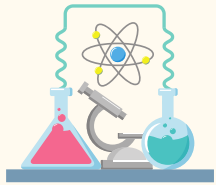
STUDENT SPOTLIGHT



We are constantly impressed by our eSchool Tigers, and we love to see their amazing work! Beginning next month, our newsletter will include photos that feature our students!

Would you like to see your child in the Student Spotlight?

Email photos of your Tiger to: herrerarc@gm.sbac.edu



4TH GRADE & 5TH GRADE: SCIENCE MATERIALS

We know that some of your science activities involve materials that you may not have at home. **If you need to check out any science materials from the eSchool office, please contact your teacher!**

T-SHIRTS FOR SALE

Show your Tiger Pride! Order your eSchool t-shirts!

front

Click [HERE](#) to order!

Click [HERE](#) to order!

Click [HERE](#) to order!

Click [HERE](#) to order!

Click [HERE](#) to order!

Click [HERE](#) to order!

Click [HERE](#) to order!

looking ahead



SEPTEMBER

SUN	MON	TUE	WED	THU	FRI	SAT
				1	2	3
4	5 No School Today	6	7	8	9	10
11	12	13	14	15	16	17
18	19	20	21	22	23	24
25	26	27	28	29	30	

September 5th
No School
(Labor Day)

September 16th
FIELD TRIP
eSchool Park
Meetup
Depot Park
10:00-12:00

September 19th-23rd
FAST Testing
PM1 (at home)
*More information is coming soon!



OCTOBER



October 4th
FIELD TRIP
Fire Station 1
10:00

October 7th
No School
(UF Homecoming)

October 14th
End of 1st
Nine Weeks
*All work due by 3pm!

October 17th
No School
(Student Holiday)

October 25th
Report Cards

SUN	MON	TUE	WED	THU	FRI	SAT
						1
2	3	4	5	6	7 No School Today	8
9	10	11	12	13	14	15
16	17 No School Today	18	19	20	21	22
23	24	25	26	27	28	29
30	31					